

Stainless Steel Mailboxes

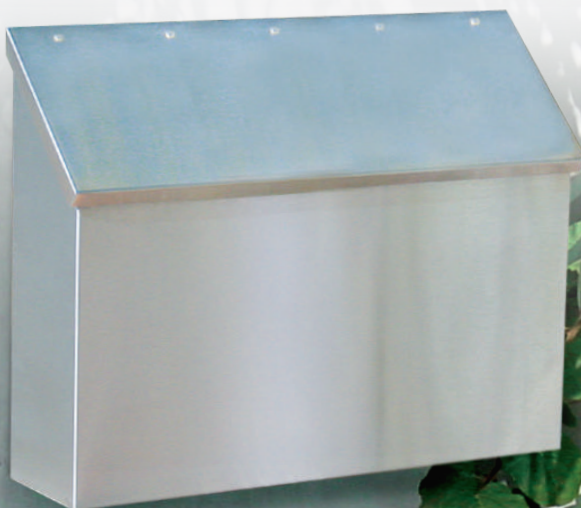
STAINLESS STEEL MAILBOXES STANDARD AND DECORATIVE

Made of 20 gauge stainless steel, Salsbury 4500 series stainless steel mailboxes are available in standard and decorative styles. Standard stainless steel mailboxes (#4510 and #4520) and decorative stainless steel mailboxes (#4515 and #4525) have a satin finish and are designed to be surface mounted. Standard and decorative stainless steel mailboxes are available in horizontal and vertical styles. Decorative stainless steel mailboxes feature a window grid design and include a privacy plate option to block visibility of the mail. Factory installed stainless steel locking security kits with two (2) keys are available on all models as an option upon request. Standard and decorative stainless steel mailboxes may be used for U.S.P.S. mail residential door delivery.



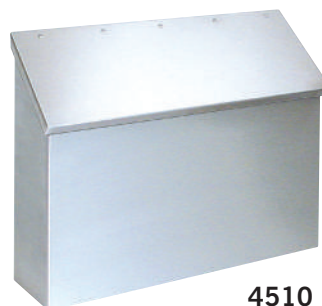
#4525 displayed

Volume Discount Pricing Available On-Line!



#4510 displayed

STAINLESS STEEL



4510

DESCRIPTION

4510 - Stainless Steel Mailbox - standard - horizontal style

UNIT SIZE

14-1/2" W x 11" H x 3-1/2" D

WEIGHT

10 lbs.

PRICE

\$80.00



4520

DESCRIPTION

4520 - Stainless Steel Mailbox - standard - vertical style

UNIT SIZE

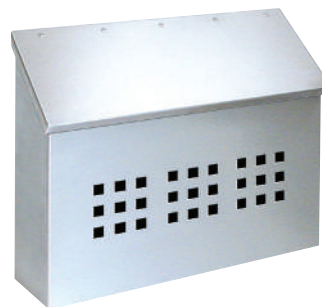
11" W x 14-1/2" H x 3-1/2" D

WEIGHT

10 lbs.

PRICE

\$80.00



4515

DESCRIPTION

4515 - Stainless Steel Mailbox - decorative - horizontal style

UNIT SIZE

14-1/2" W x 11" H x 3-1/2" D

WEIGHT

10 lbs.

PRICE

\$80.00



4525

DESCRIPTION

4525 - Stainless Steel Mailbox - decorative - vertical style

UNIT SIZE

11" W x 14-1/2" H x 3-1/2" D

WEIGHT

10 lbs.

PRICE

\$80.00

OPTIONS

4511 - Security Kit - option for #4510 / #4515

- 13-3/4" W x 3-1/2" D
- slot size: 12-1/2" W x 1" D
- 1 lb.
- \$20.00

4521 - Security Kit - option for #4520 / #4525

- 10-1/4" W x 3-1/2" D
- slot size: 9" W x 1" D
- 1 lb.
- \$20.00



#4520 with optional security kit (#4521) displayed