

Designer Roadside Mailboxes

DESIGNER ROADSIDE MAILBOXES

U.S.P.S. APPROVED

Made entirely of aluminum, Salsbury U.S.P.S. approved 4300D series designer roadside mailboxes feature both a front and rear access locking door. Available in a durable powder coated bronze, copper, brass or nickel finish, each unit includes an outgoing mail tray, a lock with two (2) keys on each door (keyed alike) and an adjustable burgundy signal flag. Mail is deposited through a non-locking access panel on the front. Designer roadside mailboxes can be mounted on the optional bolt mounted (#4365D) or in-ground mounted (#4385D) aluminum designer pedestals, in-ground mounted aluminum designer deluxe posts (#4370D, #4372D, #4373D and #4374D) or a base of your choice. Designer roadside mailboxes can also be mounted in columns, masonry or walls. Designer newspaper holders (#4315D) and non-locking thumb latches (#4388) are available as options upon request. Designer roadside mailboxes are approved for U.S.P.S. curbside mail delivery. Master postal lock not required.

Volume Discount Pricing Available On-Line!



Locking Mailboxes

(3) #4325D's on a three (3) wide spreader (#4383D) attached to an in-ground pedestal (#4385D) with custom numbers / letters (see page 103) displayed

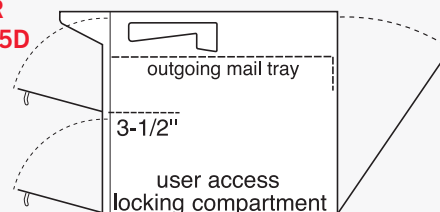


Front view of #4325D mounted in a column with custom numbers / letters (see page 103) displayed

FRONT AND REAR ACCESS ON #4325D

10" W x 1-3/4" H
outgoing mail tray

10" W x 1-3/4" H
mail deposit



DESIGNER NEWSPAPER HOLDERS

Made of heavy duty aluminum, Salsbury designer newspaper holders are a unique option for designer roadside mailboxes. Each unit has a solid back and includes mounting hardware to easily attach to the bottom of designer roadside mailboxes and to the top of designer pedestals and spreaders. Designer newspaper holders feature a durable powder coated finish available in four (4) designer colors.



4315D

DESCRIPTION

4315D¹ - Newspaper Holder

UNIT SIZE

10-1/4" W x 5" H x 12-1/4" D

WEIGHT

10 lbs.

PRICE

\$60.00

¹ Specify



bronze



copper



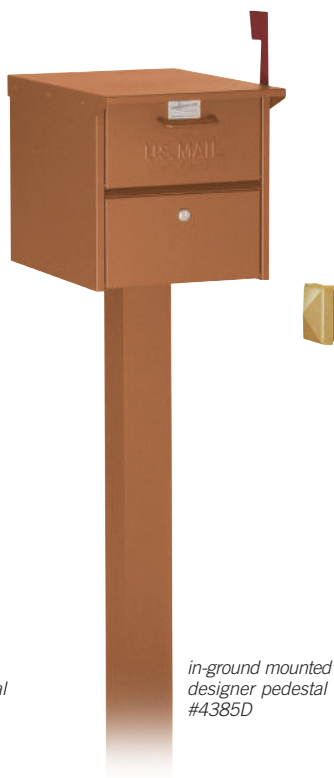
brass



nickel

**4325D**

*bolt mounted
designer pedestal
#4365D*



*in-ground mounted
designer pedestal
#4385D*



*in-ground mounted
designer deluxe post
#4370D*



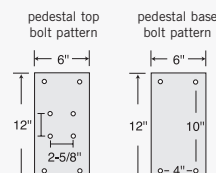
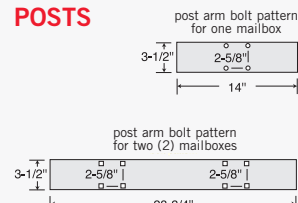
*in-ground mounted
designer deluxe post
#4370D*

DESCRIPTION**4325D¹ - Roadside Mailbox****UNIT SIZE**

12-1/2" W x 13-5/8" H x 18-1/4" D

WEIGHT

25 lbs.

PRICE**\$125.00****4365D****4385D****DESIGNER
PEDESTALS****DESIGNER DELUXE
POSTS****DESIGNER ROADSIDE MAILBOX PEDESTALS, POSTS & OPTIONS**

MODEL	DESCRIPTION	UNIT SIZE	WEIGHT	PRICE
4315D ¹	Designer Newspaper Holder	10-1/4" W x 5" H x 12-1/4" D	10 lbs.	\$60.00
4365D ¹	Designer Pedestal - bolt mounted	3-1/2" W x 32" H x 3-1/2" D	15 lbs.	\$100.00
4385D ¹	Designer Pedestal - in-ground mounted	3-1/2" W x 48" H x 3-1/2" D	20 lbs.	\$100.00
4370D ¹	Designer Deluxe Post - for (1) roadside mailbox	25" W x 81" H x 4" D	35 lbs.	\$150.00
4372D ¹	Designer Deluxe Post - for (2) roadside mailboxes	35" W x 81" H x 4" D	45 lbs.	\$175.00
4373D ¹	Designer Deluxe Post - for (3) roadside mailboxes	49" W x 81" H x 4" D	55 lbs.	\$200.00
4374D ¹	Designer Deluxe Post - for (4) roadside mailboxes	63" W x 81" H x 4" D	65 lbs.	\$225.00
4382D ¹	Designer Spreader - 2 wide	34" W x 9" D	10 lbs.	\$60.00
4383D ¹	Designer Spreader - 3 wide	55" W x 9" D	15 lbs.	\$70.00
4384D ¹	Designer Spreader - 4 wide (includes 2 support arms)	63-1/2" W x 9" D	35 lbs.	\$90.00
4390	Lock set - (2) standard replacement locks (keyed alike) - with (2) keys each		1 lb.	\$20.00
4394	Pedestal mounting kit - (4) anchor (J) bolts - for new concrete installations		3 lbs.	\$25.00
4316D	Replacement flag	2-3/4" W x 8" H x 1/4" D	1 lb.	\$10.00

CUSTOM ENGRAVED PLACARDS

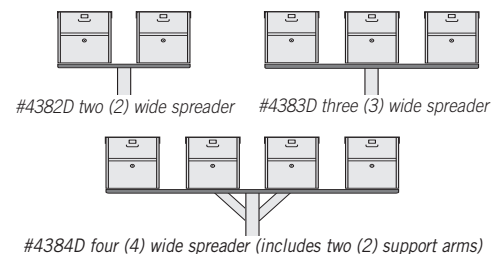
8-1/2" W x 2" H custom engraved self-adhesive placards are available as an option upon request. (#4367 - \$15.00)

3 MAPLE ST.**THUMB LATCH**

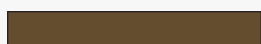
A non-locking thumb latch is available as an option upon request. (#4388 - \$10.00)

**DESIGNER
SPREADERS**

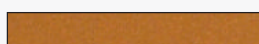
Made of heavy duty aluminum, Salsbury designer spreaders are an ideal way to mount multiple designer roadside mailboxes to pedestals. Optional two (2) wide (#4382D), three (3) wide (#4383D) and four (4) wide (#4384D) spreaders easily attach to standard pedestals (#4365D and #4385D).



*#4382D on
a designer
pedestal
(#4365D)
displayed*

¹ Specify

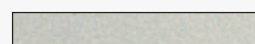
bronze



copper



brass



nickel